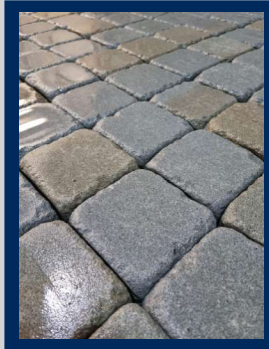
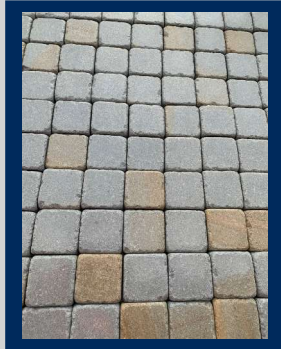


Edgehill Pennant



Description

Appearance:	Hard, fine grained sandstone
Finishes:	Sawn or Sandblasted
Governing Standards:	Where applicable BS EN 1341/1342/1343 will be applied
Quarry of Origin:	Gloucestershire

Physical Properties

Work Dimensions:	To Customer's specification
Tolerances on Dimensions:	Class 2
Compressive Strength:	87MPA
Flexural Strength:	15MPA
Material Density:	2416kg/m3 (typically)
Slip Resistance:	83 - WET (TLR Slider Test)
Water Absorption:	2.5%

Supply

Crate Size:	Maximum 1.8 tonnes, approximate size 1.0 x 1.0 x 0.80 high
Packaging:	Wooden crates, suitable for stacking & transportation by forklift

Cleaning & Maintenance

Use of mechanical cleaning, especially wire brushing, should be avoided as this will reduce, over time, skid resistance. Washing with clean water should be adequate but not pressure jetting as this could eventually remove the jointing material.